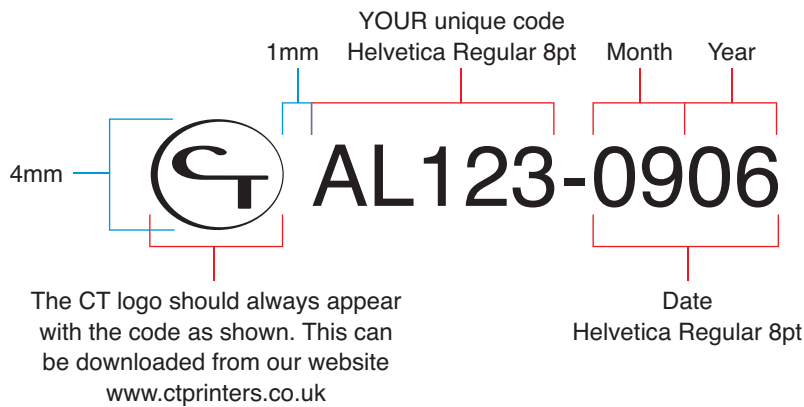
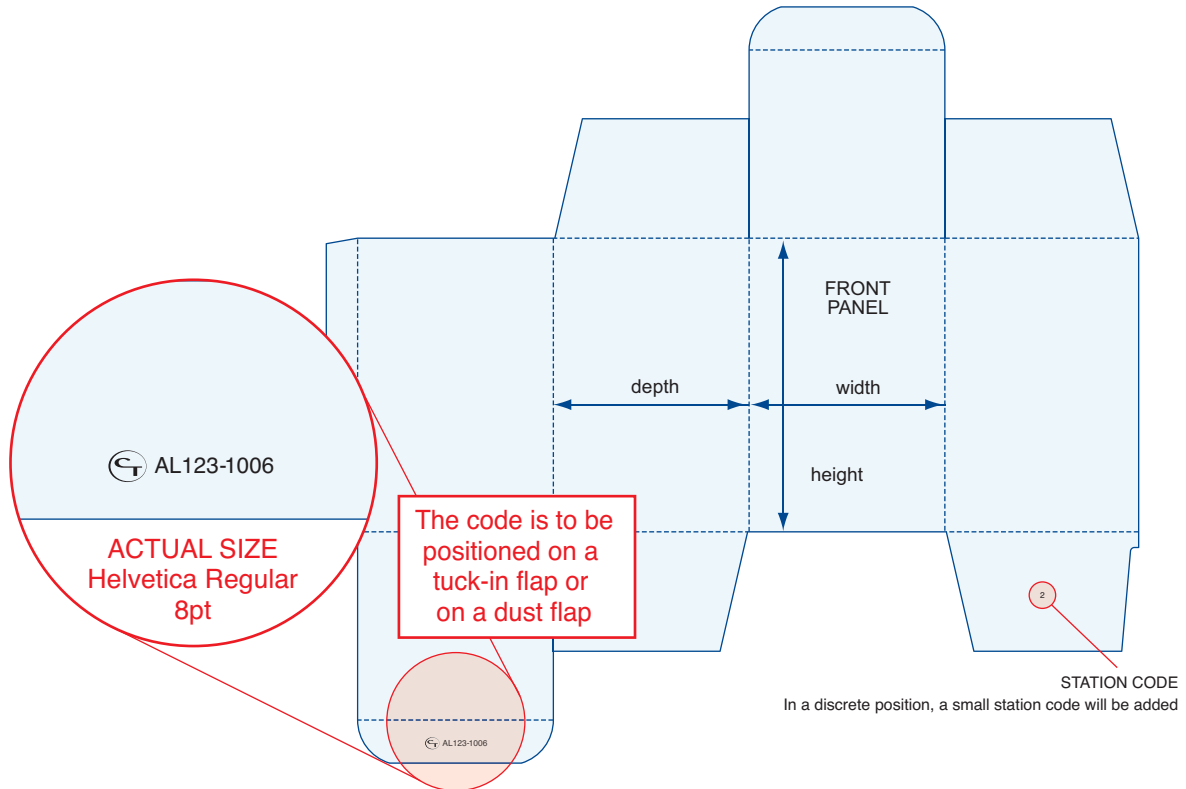

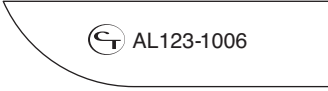
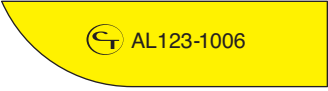
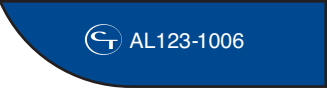






CT Printers - Code Specification Reverse Tuck End Pack

As part of our ongoing quality control and traceability process we require a code to be printed on each pack. When producing artwork the following rules should be observed. If you have any queries please contact us on 0116 236 3884 or email info@ctprinters.co.uk.



- You can use any combination of numbers and letters for your unique code.
- The date should **always** be included in the format shown.
- The date code will only change if amendments are made to the artwork.
- The font used is Helvetica Regular 8pt (Arial Regular 8pt can be used as an alternative).

 Correct	 White background Black text*	 Light background Black text*	 Dark background White out text
 Incorrect	 White background Light text	 Light background White or light text	 Dark background Black or dark text

*If black cannot be used please use the darkest colour available - Please ensure the code is legible.