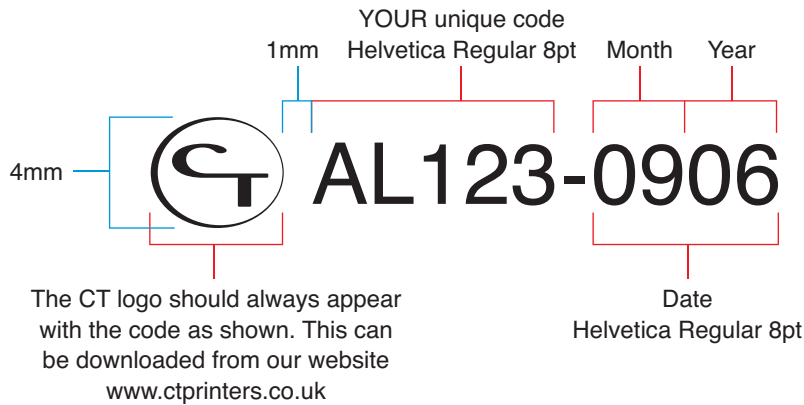
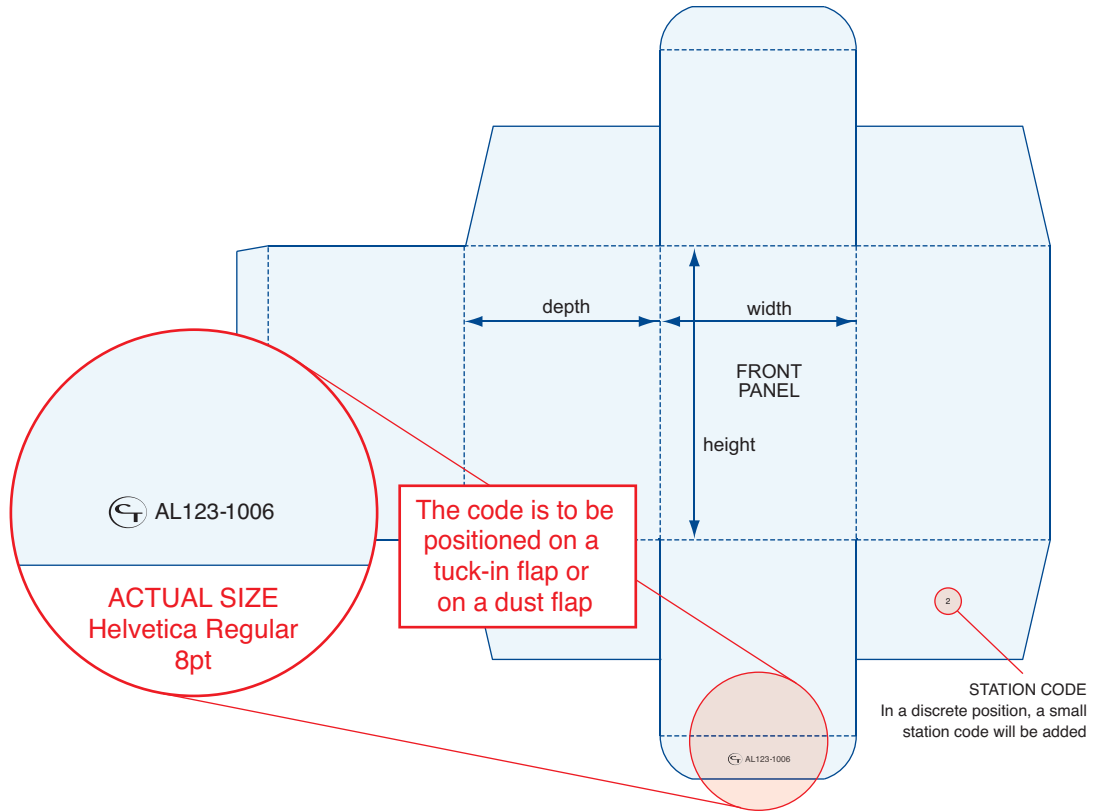

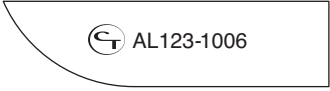

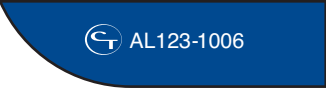






# CT Printers - Code Specification Opposite Tuck End Pack

As part of our ongoing quality control and traceability process we require a code to be printed on each pack. When producing artwork the following rules should be observed. If you have any queries please contact us on 0116 236 3884 or email [info@ctprinters.co.uk](mailto:info@ctprinters.co.uk).



- You can use any combination of numbers and letters for your unique code.
- The date should **always** be included in the format shown.
- The date code will only change if amendments are made to the artwork.
- The font used is Helvetica Regular 8pt (Arial Regular 8pt can be used as an alternative).

 <b>Correct</b>	 White background Black text*	 Light background Black text*	 Dark background White out text
 <b>Incorrect</b>	 White background Light text	 Light background White or light text	 Dark background Black or dark text

\*If black cannot be used please use the darkest colour available - Please ensure the code is legible.